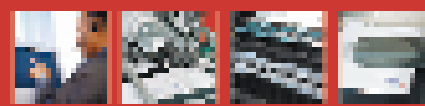


➤ Integrating HP in the Physical Process



**The MCS Array Imager**

*One Easy Upgrade. An Array of New Capabilities.*



4000 Green Avenue  
Columbia, MD 21044-4104

800.729.0104 toll free  
301.995.3100 fax

[www.mcsarray.com](http://www.mcsarray.com)



+More productivity +More flexibility +More functionality  
**You can always expect more from MCS**

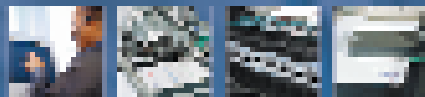
## The MCS Array Imager

One Easy Upgrade. An Array of New Capabilities.

### Modular. Affordable. Transformational.

Introducing an HP inkjet printer that helps you expand your capabilities—and speed your operations—faster than ever before.

The MCS Array Inkjet is the easy way to get the hard jobs done. Imagine a print area that expands from 4" to 16". The ability to print in 24 languages. And printing speeds of up to 36,000 pages per hour. On surfaces ranging from primary and secondary packaging to roll-to-roll and corrugated boxes.



### Field the Future—Fast

The MCS Array Imager is a modular, easy-to-install system—an easy upgrade that's compatible with most inkjet bases, including the MCS Pro 600 InkJet System.

What's more, with MCS you receive the confidence of responsive, expert technical support. One call connects you with prompt answers to any questions ... plus training, customization, maintenance and more.

### Advanced, User-Friendly Functions

Our user-friendly, Windows-based WYSIWYG software gives you easy access to advanced capabilities:

- Unlimited conditional bitmaps [from product summary sheet; website lists "up to 3,000"]
- Support for 24 international languages
- Advanced native barcode support
- Mention unlimited (or extended) print length?
- Spreadsheet format to view screen data "live"
- Rotation of variable data
- Justification of variable data (up, left, center, bottom)
- Serialization, sequential numbering, counters, time and date codes
- Field formatting for combining fields
- Advanced database support (includes comma delimited, ASCII fixed, user definable)
- Multiple speeds and resolutions
- Ethernet connectivity

### > HP Reputation ... MCS Innovation

The sophisticated functions of the MCS Array Imager are based on dependable, affordable HP technology—known for high print quality and reliability, easy maintenance and user-friendly operation. With HP, you're assured of performance that will enhance your image.

The MCS Array imager has HP's signature high resolution and can handle a wide range of ink sets: black, versatile black, spot colors (any PMS Color), invisible ink and bladders.

### Take your operations farther ... faster ... with the MCS Array Imager

#### The MCS Array Imager—Tech Specs

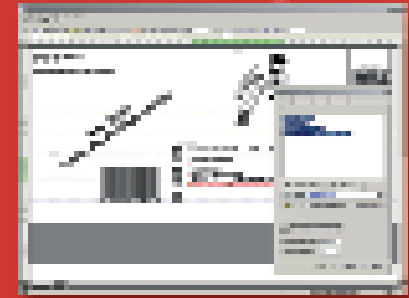
<b>Max. Speeds:</b>	up to 36,000 pph
<b>Resolution:</b>	up to 600 dpi: 600 X 600/300/150 dpi 600 X 600 @ 25 inches/second (125 FPM) 600 X 300 @ 50 inches/second (250 FPM) 600 X 150 @ 100 inches/second (500 FPM)
<b>Print area:</b>	4" - 16"
<b>Small controller sizes:</b>	2", 4" (daisy-chainable via Firewire; use together or as separate systems)
<b>Large controller sizes:</b>	2" to 16"
<b>Head sizes:</b>	2", 4", 6", 8" and 10" heads (larger sizes possible).
<b>Duplex printing available</b>	
<b>Conditional bit maps:</b>	can print up to 3,000
<b>Variable data rotation:</b>	up to 360° in 1° increments
<b>Pens:</b>	Hewlett-Packard 51645A (1/2" print each @ 600 nozzles per inch)
<b>Read-print:</b>	Interface to the MCS Perfect Match System Optional camera barcode reader (1D or 2D) for input source (supplies record number or search criteria for data file)
<b>Print-verify:</b>	Optional camera barcode reader (1D or 2D) for print verification
<b>Full Unicode file support:</b>	16-bit characters, diacritics, big or little endian; all code pages supported  Up-to-date user interface exploits the latest Windows features: resizable dialog boxes, font selection with font preview, data-file grids (spreadsheet), true per-piece print preview (including all object types: barcodes, variable bitmaps, etc.) with record scrolling
<b>Embedded rendering</b>	(no font for barcodes; bar/gap widths are correct at any resolution)
<b>Data source:</b>	Fixed (no data source), file, RS-232, RS-422, ethernet
<b>Rich Text Format support</b>	Including paragraph formatting and wrapping, different fonts on the same line, etc.
<b>Reads data files directly OR Data-file formats:</b>	Including dBase, Access, ASCII, and Scitex
<b>Proofing:</b>	<ul style="list-style-type: none"><li>• The MCS Arraying Imaging Software allows for proofs to any windows printer.</li><li>• CSV (comma-separated value)</li><li>• Variable fixed-length fields (each field a different number of characters)</li><li>• Database: Access (.mdb), FoxPro (.dbf) supported natively (no file conversion); allows SQL "SELECT" statement</li><li>• Custom: Specify field terminators/lengths, record terminators/numbers of fields</li><li>• Scitex fixed</li><li>• Text I, Text II</li></ul>



The MCS Array Imager takes you farther than any other printer. So don't wait to get ahead.

Phone 800.728.0154 or visit [www.mcspro.com](http://www.mcspro.com) today.

MCS Array Software is easy to use



### > One Source for Power Performance

With MCS, you have a partner who can supply reliable, durable system components and provide friendly expertise on-call. Telephone support is free for every product we sell.

### RSI Feeder and Vacuum Base

#### RSI Feeders:

Both Feeders integrate into the RSI bases for E-stop and Speed Control  
RSI Friction Feeder with 2' stacker  
RSI Continuous Feeder with 6' or 9' input conveyor.

#### RSI Bases:

RSI 715 Base – perfect to inkjet off of inserters  
Length – 54"  
Width – 26"  
Paper Path 21"

RSI 915 Base – Built in drier extension  
Length – 84"  
Width – 26"  
Paper Path 21"

RSI 1015 Base – top of the line, built in registration table, digitally controlled, great for forms.  
Length – 107"  
Width – 27"  
Paper Path 20"

### RSI DH6400 Dryer

**Power:**  
6400 watts

**Drying area:**  
6" wide by 16" long  
Requires 220-240VAC/40A/1 Ø

### RSI Conveyor

**Length:**  
6' and 10'

