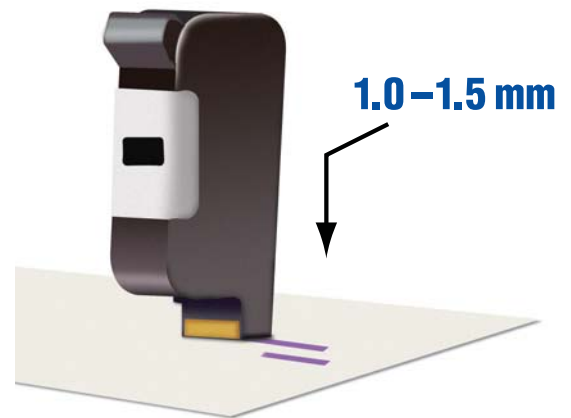




Nozzle-to-paper distance

For best print-quality results, maintain 1.0 mm to 1.5 mm printhead nozzle-to-paper distance.



Printhead cleaning

To maintain good print quality, wipe excess ink from the printhead.

1. Use a lint-free cloth, moistened with de-ionised water.
- 2–3. Wipe slowly and lightly across tip of the long edge with the printhead facing down as shown.

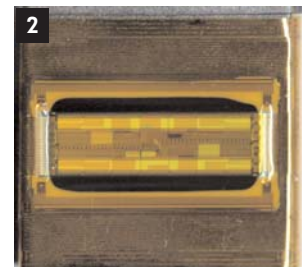
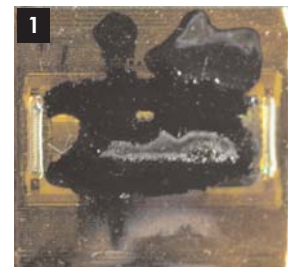
Important notes

- Do not use force or a dry cloth to avoid scratching the nozzles.
- Do not use a cloth with lint to avoid clogging the nozzles.



Does your print cartridge need cleaning?

1. This dirty printhead requires wiping.
2. This is how your printhead should look after cleaning.



Purge the nozzles

If your print cartridge sits inactive for a period of time, you should purge the nozzles by following these steps.

- Wipe the print cartridge as show in the Printhead Cleaning section above.
- Print a few lines of high-resolution text (600 dpi or higher).
 - Higher resolutions exercise more nozzles and push out more ink.

Important note

- Do not shake the cartridge as ink pressure will damage the nozzles.



Short- and long-term storage procedures

If stored for less than two days

- Leave print cartridge in the machine, capped or uncapped.
- Wipe and purge the print cartridge next time it is used.

If stored for more than three days

- Leave print cartridge capped if the printing system has a capping station.
- To prevent print cartridge from drying out, place it in an airtight container with a damp cloth or sponge.
- Close the container tightly.
- Wipe and purge the print cartridge next time it is used.



Promail Ltd

**Units 12 & 13 Network 43
Buckingham Court
Buckingham Road
Brackley
Northants
NN13 7EU**

Tel: 01280 709590
Fax: 01280 706200
Web: www.promail.co.uk

© 2006 Hewlett-Packard Development Company, L.P. The information contained herein is subject to change without notice. The only warranties for HP products and services are set forth in the express warranty statements accompanying such products and services. Nothing herein should be construed as constituting an additional warranty. HP shall not be liable for technical or editorial errors or omissions contained herein.

To learn more, visit www.hp.com

4AA0-9439ENUC, November 2006

